

job name:
 type:

26" n.r.2oob™ spec sheet 90CRI

material

trim ring
 precision CNC spun .063" aluminum. rolled top edge for added strength.
diffuser
 .125" virgin white acrylic inner lens.

optics

reflector
 22 gauge aluminum powder coat painted high reflectance matte white.

LED

custom LED board in 3000K, 3500K, or 4000K (90+ cri standard).under normal operating conditions, the LEDs employed are rated for >50,000hrs L70 (6.8K) per IES TM-21 from LM-80 test data. white power cord is standard with other color options listed below.

driver

integral, programmable, UL class P, class 2, universal input (120-277v), constant current, 0-10v dimming, 1% minimum dimming level, PF >.9, THD <20%, protections include open and short circuit, overload and over temperature.

mounting

5"dia. spun steel canopy in satin white. four point vertical suspension of 12 ft long stainless steel cables attach to trim with field adjustable grippers that allow for exact AFF mounting heights. optional quadpod to single point cable suspension, with sloped ceiling adapter.

emergency

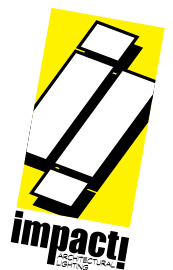
recommend use of inverter (by other).
 optional WREM: wired for remote EM battery (by other). 2nd power cord required.



catalog number

--	--	--	--	--	--

size	CCT	lumens	painting finish	power cord	options
P6426 (2ft) 26"dia X 4"ht <small>see page 2 & 3 for info on P6438 and P6448</small>	30 3000K 35 3500K 40 4000K	LO 3790 lm HI 7075 lm CL xxxx lm <small>custom lumens consult factory (1890 lm - 7075 lm)</small>	AP anodized paint BS brass BU blue BZ bronze CP champagne FB flat black GM gun metal MB military blue MW matte white OR orange RD red SB satin black SS satin silver TG textured gray YO yellow premium finish RAL specify RAL#	WHPC white power cord and canopy BKPC black power cord and canopy SBPC silver braid power cord and white canopy	6FT 72" cables 12FT 144" cables QPD Quadpod hanging system <small>choose suspension length above when selecting -QPD</small> WREM wired for remote EM battery pack <small>(by other) (see note above)</small> ELD EldoLED* LUT Lutron* <small>*consult factory</small>



job name:
 type:

38" n.r.2oob™ spec sheet 90CRI

material

trim ring
 precision CNC spun .063" aluminum. rolled top edge for added strength.
diffuser
 .125" virgin white acrylic inner lens.

optics

reflector
 22 gauge aluminum powder coat painted high reflectance matte white.

LED

custom LED board in 3000K, 3500K, or 4000K (90+ cri standard).under normal operating conditions, the LEDs employed are rated for >50,000hrs L70 (6.8K) per IES TM-21 from LM-80 test data. white power cord is standard with other color options listed below.

driver

integral, programmable, UL class P, class 2, universal input (120-277v), constant current, 0-10v dimming, 1% minimum dimming level, PF >.9, THD <20%, protections include open and short circuit, overload and over temperature.

mounting

5"dia. spun steel canopy in satin white. four point vertical suspension of 12 ft long stainless steel cables attach to trim with field adjustable grippers that allow for exact AFF mounting heights. optional quadpod to single point cable suspension, with sloped ceiling adapter.

emergency

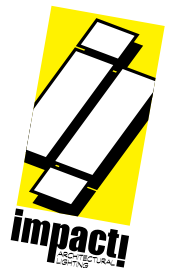
recommend use of inverter (by other).
 optional WREM: wired for remote EM battery (by other). 2nd power cord required.



catalog number

<input type="text"/>	<input type="text"/>	<input type="text"/>	<input type="text"/>	<input type="text"/>	<input type="text"/>
----------------------	----------------------	----------------------	----------------------	----------------------	----------------------

size	CCT	lumens	painting finish	power cord	options
P6438 (3ft) 38"dia X 5.5"ht see page 3 for info on P6448	30 3000K 35 3500K 40 4000K	LO 4275 lm HI 8880 lm CL xxxx lm custom lumens consult factory (2525 lm - 8880 lm)	AP anodized paint BS brass BU blue BZ bronze CP champagne FB flat black GM gun metal MB military blue MW matte white OR orange RD red SB satin black SS satin silver TG textured gray YO yellow	WHPC white power cord and canopy BKPC black power cord and canopy SBPC silver braid power cord and white canopy	6FT 72" cables 12FT 144" cables QPD Quadpod hanging system choose suspension length above when selecting -QPD WREM wired for remote EM battery pack (by other) (see note above) ELD EldoLED* LUT Lutron* *consult factory
			premium finish RAL specify RAL#		



job name:
 type:

48" n.r.2oob™ spec sheet 90CRI

material

trim ring
 precision CNC spun .063" aluminum. rolled top edge for added strength.
diffuser
 .125" virgin white acrylic inner lens.

optics

reflector
 22 gauge aluminum powder coat painted high reflectance matte white.

LED

custom LED board in 3000K, 3500K, or 4000K (90+ cri standard).under normal operating conditions, the LEDs employed are rated for >50,000hrs L70 (6.8K) per IES TM-21 from LM-80 test data. white power cord is standard with other color options listed below.

driver

integral, programmable, UL class P, class 2, universal input (120-277v), constant current, 0-10v dimming, 1% minimum dimming level, PF >.9, THD <20%, protections include open and short circuit, overload and over temperature.

mounting

5"dia. spun steel canopy in satin white. four point vertical suspension of 12 ft long stainless steel cables attach to trim with field adjustable grippers that allow for exact AFF mounting heights. optional quadpod to single point cable suspension, with sloped ceiling adapter.

emergency

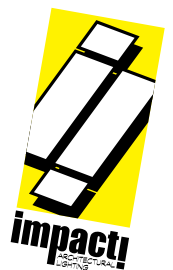
recommend use of inverter (by other).
 optional WREM: wired for remote EM battery (by other). 2nd power cord required.

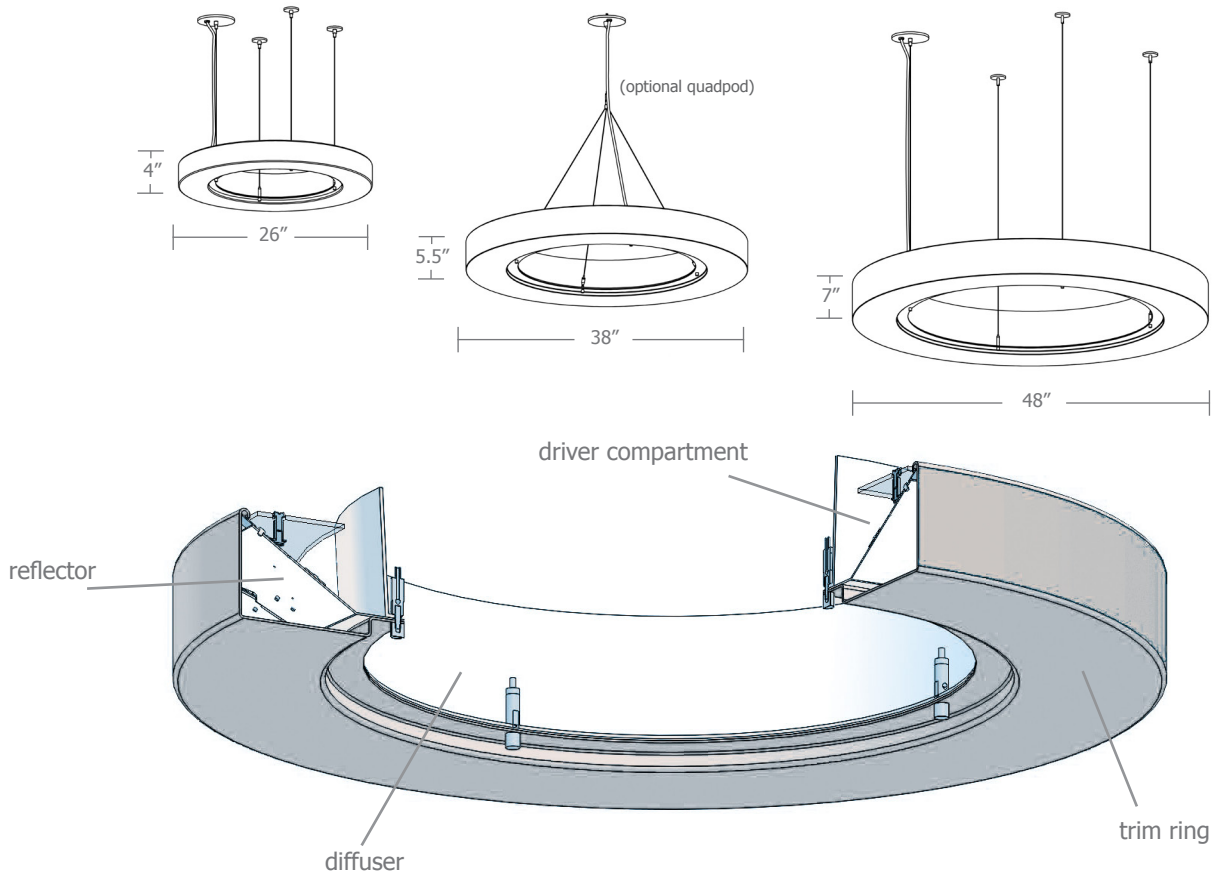


catalog number

--	--	--	--	--	--

size	CCT	lumens	painting finish	power cord	options
P6448 (4ft) 48"dia X 7"ht	30 3000K 35 3500K 40 4000K	LO 7290 lm HI 11930 lm CL xxxx lm custom lumens consult factory (3120 lm - 11930 lm)	AP anodized paint BS brass BU blue BZ bronze CP champagne FB flat black GM gun metal MB military blue MW matte white OR orange RD red SB satin black SS satin silver TG textured gray YO yellow	WHPC white power cord and canopy BKPC black power cord and canopy SBPC silver braid power cord and white canopy	6FT 72" cables 12FT 144" cables QPD Quadpod hanging system choose suspension length above when selecting -QPD WREM wired for remote EM battery pack (by other) (see note above) ELD EldoLED* LUT Lutron* *consult factory
			premium finish RAL specify RAL#		

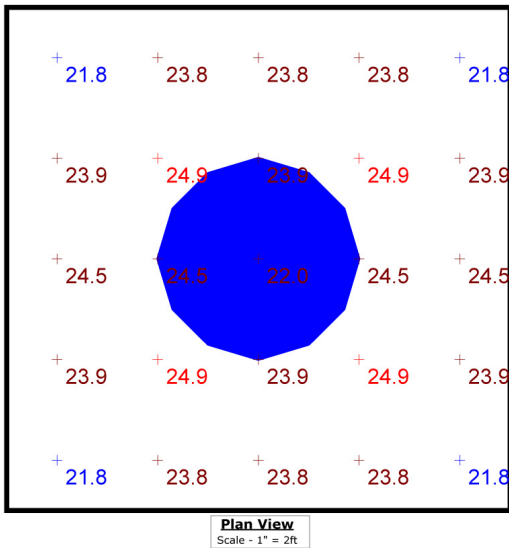




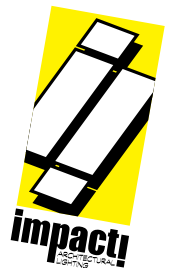
Typical Lighting Layout

Schedule						
Symbol	QTY	Manufacturer	Catalog Number	Description	Lamp	Wattage
	1	Impact Architectural Lighting	P6448 40 HI	48" dia. pendant n.r.2oob luminaire	4000k 90cri LED	98

Statistics						
Description	Symbol	Avg	Max	Min	Max/Min	Avg/Min
n.r.2oob	+	23.7 fc	24.9 fc	21.8 fc	1.1:1	1.1:1



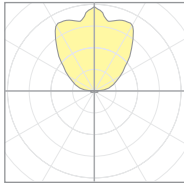
- 10' x 10' x 10'H space
- 80/50/20 reflectances
- bottom of fixture at 8' aff
- FC readings at 2.5' aff
- layout conducted using P6448 HI lumen 90 CRI package (8880 delivered lumens)



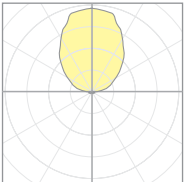
Calculation Table

The application of a Light Loss Factor is required to:

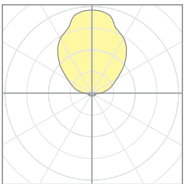
- match the lumen output for the power module specified
- incorporate the increased lumen output due to LED/Driver upgrades



19616
P6426-40HI



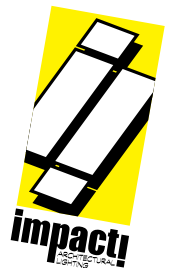
19313
P6438-40HI



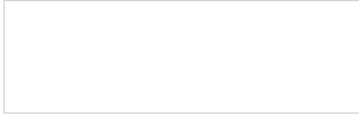
19316
P6448-40HI

Cat No	Delivered* Lumens	Watts 120V / 277V	IES File #	LLF to be applied
P6426 LO	3838	31	19308	1.27
P6426 HI	7147	62	19616	.99
P6438 LO	3902	36	19311	1.17
P6438 HI	7571	78	19313	1.17
P6448 LO	6838	61	19314	1.14
P6448 HI	11242	104	19316	1.06

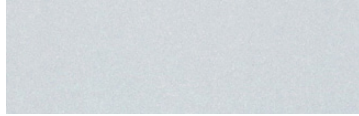
*delivered lumens based on 4000K, 90+ cri



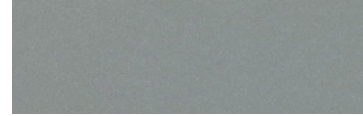
Powder Coat Paint Finishes



MW matte white



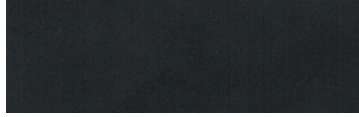
AP anodized paint



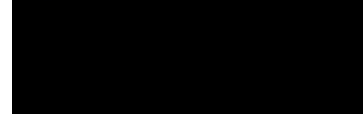
SS satin silver



TG textured gray



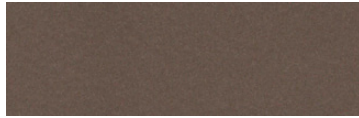
FB flat black



SB satin black



CP champagne



BZ bronze



GM gun metal



OR orange 2011



BU blue 5017



BS brass



RD red 3020



YO yellow 1018



MB military blue

For accurate color verification, actual finish samples are available upon request.

Premium Finishes*



RAL#

*Available on select series. Consult product submittal for availability.

